



33 PENTHOUSE DUPLEX ST GEORGE TERRACE

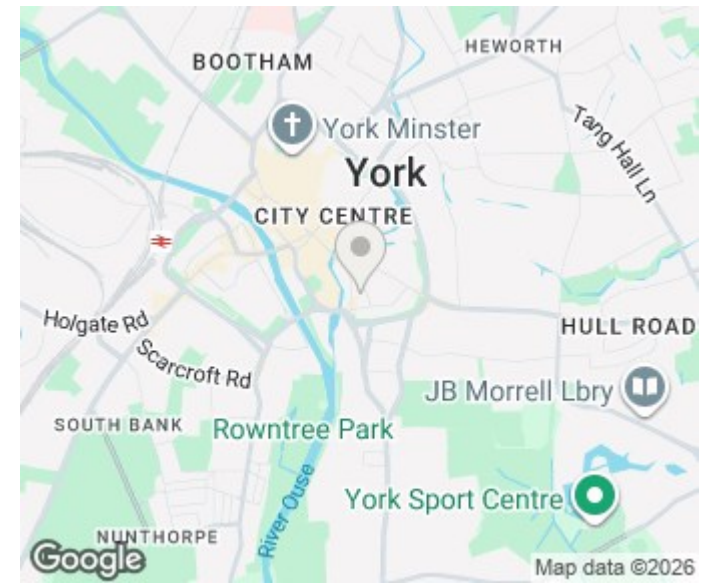
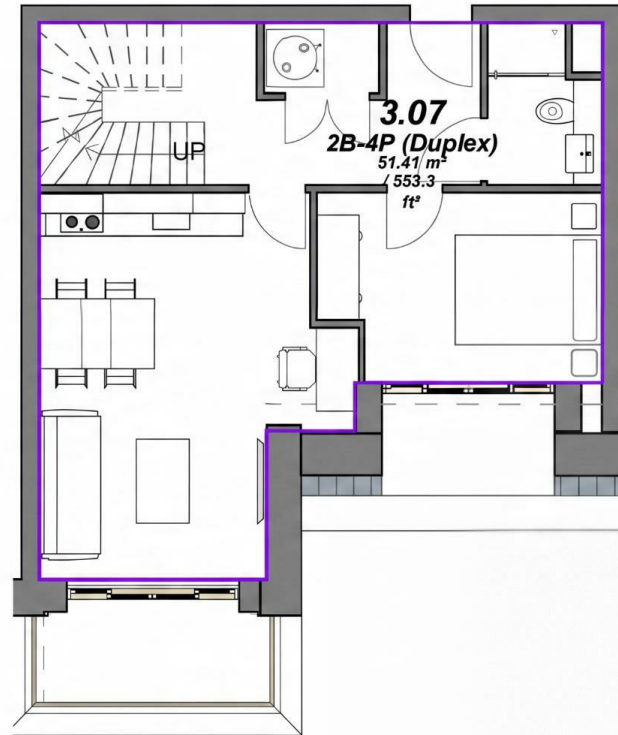
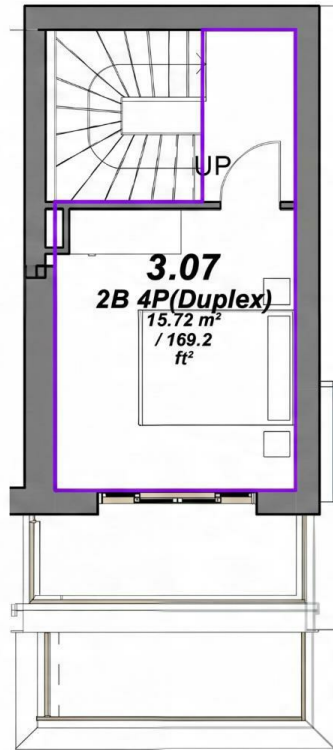
YORK, YO1 9PY

£467,000
LEASEHOLD

An exceptional two-bedroom duplex apartment extending to 855 sq ft, offering stylish open-plan living, a private terrace and premium finishes throughout. Situated within the exclusive St. George's Terrace development, this beautifully designed home combines contemporary luxury with an unrivalled city-centre location in the heart of York.

MONROE

SELLERS OF THE FINEST HOMES



Agents Note: Whilst every care has been taken to prepare these particulars, they are for guidance purposes only. All measurements are approximate and are for general guidance purposes only and whilst every care has been taken to ensure their accuracy, they should not be relied upon and potential buyers/tenants are advised to recheck the measurements

Land & New Homes
 1-3 The Avenue
 Alwoodley
 Leeds
 West Yorkshire
 LS17 7BD

0113 350 1444
 landandnewhomes@monroestateagents.com
 www.monroestateagents.com

MONROE

SELLERS OF THE FINEST HOMES